

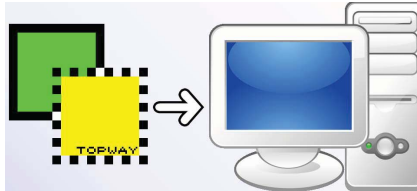
Basic

TOPWAY Smart LCD provides a display engine and a versatile range of TFT display sizes and Touch-Panels to support a wide range of industrial and instrumentation applications. The pre-loaded User Interface (UI) reduces the host system's workload and provides a much faster interaction with the user. UI designs are implemented under usage of TOPWAY TML Graphics Editor allowing designs with zero coding. It dramatically simplifies and speeds up the whole product design process.

Start

Install TOPWAY TML Graphics Editor to PC (*1)

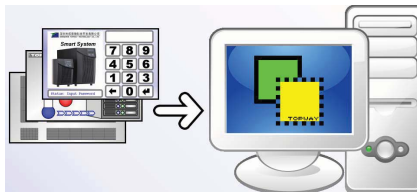
①



Note: TML Graphics Editor support Windows XP, Windows Vista and Window 7 (Administrator Mode)

Import application pictures into the Editor (*2)

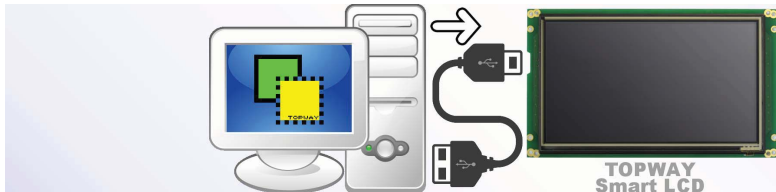
②



Note: TML Graphics Editor support BMP(32bit), BMP(24bit), JPG, PNG, etc picture format

Download display data to Smart LCD via USB connection (*2)

③



Note: Use 啊 quality USB(A) to USB(mini) cable directly attach to the PC motherboard for better power and signaling

Apply power supply to Smart LCD for display (*3)

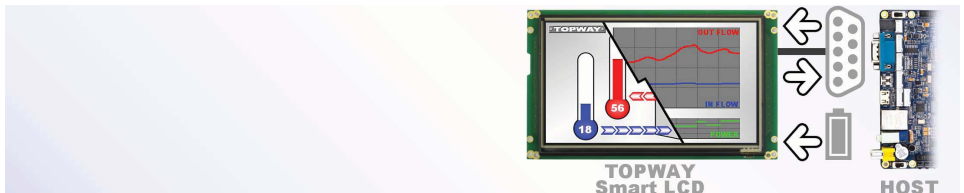
④



Note: Please refer to the user manual for connection polarity and voltage.

Connecting Smart LCD with host, to display real time data (*3, *4)

⑤



Note: RS-232C terminal is common grounded with the supply (some models providing logic level UART interface)

- Reference document
- *1. TOPWAY_TML_Graphics_Editor_用户手册
 - *2. AN-15-0024(TOPWAY_智能模块快速入门简例集)
 - *3. Related user manual and outline drawing
 - *4. AN-15-0004(HMT050CC_HMT070CE_HMT080EB_HMT090CA 系列串口指令应用说明)

Connections

